

1 GROUND FLOOR
1:100



2 FIRST FLOOR
1:100

| TYPE | ONE BEDROOM | | | TOTAL |
|-------------------|-------------|--------------------|-----|---------------------|
| | PLOT NUMBER | AREA | No. | |
| 1B2P M4(2) TYPE 1 | 31,37 | 50.8m ² | 2 | 101.6m ² |
| 1B2P M4(2) TYPE 2 | 33,39 | 50.2m ² | 2 | 100.4m ² |

| TYPE | TWO BEDROOM | | | TOTAL |
|-----------------------|-------------|--------------------|-----|---------------------|
| | PLOT NUMBER | AREA | No. | |
| 2B3P M4(3)(2)a TYPE 3 | 29,35 | 73.9m ² | 2 | 147.8m ² |
| 2B4P M4(3)(2)a TYPE 3 | 30,36 | 73.9m ² | 2 | 147.8m ² |
| 2B4P M4(3)(2)a TYPE 3 | 32,38 | 73.9m ² | 2 | 147.8m ² |
| 2B4P M4(3)(2)a TYPE 3 | 34 | 73.9m ² | 1 | 73.9m ² |
| 2B4P M4(2) TYPE 4 | 40 | 73.9m ² | 1 | 73.9m ² |

| | | |
|-------------|----------------------|---------------------|
| TOTAL | 12 | 793.2m ² |
| CAR PARKING | 12(100%) inc 7 dis.* | |
| | *4 bays are external | |

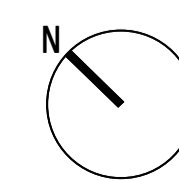
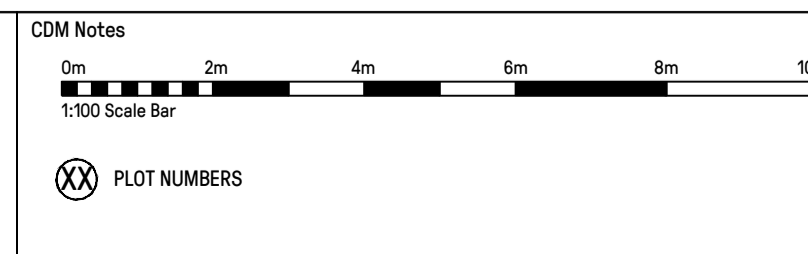
| | |
|---------------------|----------------------|
| GROSS INTERNAL AREA | 1573.0m ² |
|---------------------|----------------------|

A - Circulation core moved further towards the East, with the external wall by the staircase pushed out so that it is protruding on the facade. Secondary direct access to core from undercroft omitted from plan. Two parking spaces added externally to the South-East side of the building and two parking spaces added within the undercroft garage.
B - Added Apartment schedule table.

06.10.22 TM JB

21.10.22 RR JB

| Revision | Date | By | Chkd | CDM Notes |
|---|----------|----|------|-----------|
| C - Added Riser adjacent to lift. Added access doors to risers. Added refuse store/waste management text. Changed refuse store door type. | 02.11.22 | RR | JB | |
| D - Minor modifications to the internal layout of plots 29, 30, 32 and 34 to comply with M4(3). Schedule updated with correct information of plots. | 07.02.23 | MT | JB | |
| E - Minor modifications to bathroom layouts on M4(3) compliant flats. Staircase well increase to allow addition of steps from ground floor to first floor. | 22.02.23 | MT | JB | |
| F - Glass panel added to entrance door at ground floor. Parking re-arrangement to suit M4(3) requirements, cycle store to have external entrance only. | 21.03.23 | MT | JB | |
| G - Kitchen, Living and Dining window to be obscured glazing on plot 30. | 31.03.23 | MT | JB | |
| H - Hit and miss brick opening at ground floor updated to suit opening at first floor. Plot 34 plan updated to replicate Plot 35 apartment layout with balcony facing north-east. | 18.05.23 | MT | JB | |
| J - Additional posts on all balconies close to wall. | 07.06.23 | MT | JB | |



Project
CAMPFIELD ROAD
SHOEBURNESS
SOUTHEND-ON-SEA

Scale
1:100 @A1

Dated
JUNE-2022

Job No.
71407

Drawing No.
D-220

Drawn by
MT

Checked
JB

Client
Taylor Wimpey

DISB Element
PLANNING

Revision
J

